

H25000

H1500

Yumizen
Solutions for Laboratories

Yumizen
H2500

Yumizen
H1500

«Mastering the analysis process to deliver reliable results»

The new generation of HORIBA Medical automated hematology analyzer answers customers expectations of solid and reliable diagnostic technology as well as rapid and consistent results.

- A real throughput of 120 samples per hour for CBC-DIFF, NRBC and slides
- 110µl sampling only (rotative shear valve)
- Integrated reagents on board (5 for Yumizen H2500 and 4 for Yumizen H1500)
- Automatic 360°C rotative sample mixing for perfect homogeneity
- Up to 55 parameters
- Low value cycle (LVC) with extended counting
- NRBC included in the DIFF cycle
- Optical platelets (optical extinction technology)
- White and red blood cell immature channels



Yumizen
P8000

Middleware and expert validation station with Multi site management capacities : patient's results, Quality Controls, Multi instrument connectivity, TAT monitoring, remote access.

The Yumizen P8000 embeds a standardized rules package including ISLH rules and also offers the flexibility to create tailor made rules for rerun, reflex tests, comments and the automatic validation process.

Complete traceability for accreditation

Yumizen
SPS

Option on Yumizen H2500

The reference in fully automated smearing and staining ensures:

- User and results security
- Standardized Quality blood smears
- Bi-directional query mode for requested or reflex slides
- A real throughput of 120 slides/h
- A staining STAT mode

Unique features

Comprehensive sample management

- Single sampling needle for both rack and STAT mode
- Low sampling volume of 110µl
- STAT and manual mode with multi pre calibrated types of tubes (pediatric, micro-cup ...)
- New rack system compatible with most of other EDTA sample systems - analyzers and sorters
- Innovative four sided autoloader for perfect sample mixing and optimized loading

Expert diagnostic with robust and extended parameters

- CBC – DIFF NRBC with expert menus for 3 dimensional analysis (CVD : Complexity, Volume and distribution)
- Immature WBC
- Reticulocytes
- MIC%, MAC%
- Plt Ox
- Body Fluid (available Q3 2017) and LVC (Low Value Cycle)

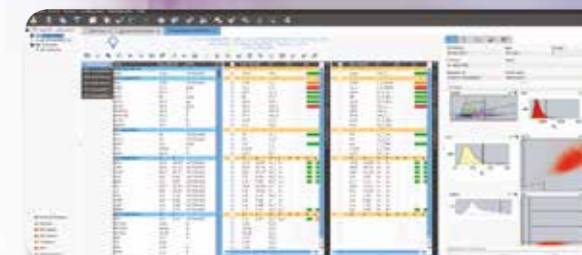
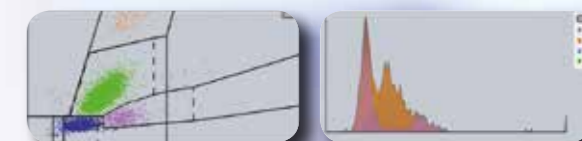
Yumizen P8000

Expert middleware with its extended monitoring capabilities:

- Workload management
- Real time key performance indicators
- Continuous productivity (even during LIS down time)
- Web based application

Multi configurations

Benchtop, floor-standing or integrated in the HELO* solution with the automated tracking conveyor Yumizen T6000



* HORIBA Evolutive Laboratory Organisation

SPECIFICATION

H1500

H2500

H2500 SPS



	YUMIZEN H1500	YUMIZEN H2500	YUMIZEN H2500 SPS
Troughput analyzer	120 tests/Hour	120 tests/Hour	120 tests/Hour
Slide production system (SPS)	-	-	120 slides/Hour
CBC / DIFF	Yes	Yes	Yes
NRBC (Nucleated Red Blood Cells) included in DIFF cycle	Yes	Yes	Yes
RET (Reticulocytes)	-	Yes	Yes
BF (Body Fluid) (available Q3 2017)	Yes	Yes	Yes
LVC (Low Value Cycle)	Yes	Yes	Yes
Plt Ox	-	Yes	Yes
Interface			
Yumizen P8000	Included	Included	Included
Benchtop capability	Yes	Yes	Yes
Floorstanding capability	Yes	Yes	Yes
Connectable to T6000 tracking system (HELO*)	Yes	Yes	Yes
Technologies			
Impedancemetry	Yes	Yes	Yes
Cytometry	Yes	Yes	Yes
Fluorescence	-	Yes	Yes
CVD - DIF (Complexity, Volume, Distribution)	Yes	Yes	Yes
MGG staining	-	-	Yes
Wright staining	-	-	Yes
Optical extinction platelets	-	Yes	Yes
CE Marked	Yes	Yes	Yes
FDA cleared	-	-	-

HORIBA
Medical

FRANCE +33 (0)4 67 14 15 15 - ITALY +39 / 06 51 59 22 1 - SPAIN +34 / 91- 353 30 10 - PORTUGAL +351 / 2 14 72 17 70 - UK +44 (0) 1604 542650
POLAND +48 / 22 30 05 460 - USA +1 / 949 453 0500 - BRAZIL +55 / 11 2923-5439 - THAILAND +66 / 2 861 59 95 - CHINA +86 / 21 3222 1818
INDIA +91 / 11 4646 5000 - GERMANY AXON LAB AG +49 / 7153 92260 - DISTRIBUTORS NETWORK +33 (0)4 67 14 15 16

HORIBA Medical online : <http://www.horiba.com/medical>



Operating IMS

